

# 11 Transport, Communication, and Tourism

## TRANSPORT

### Introduction

In 1985-86 the Transport, storage, and communication industry sector contributed 7.5 per cent of the total Victorian Gross Domestic Product (GDP) at factor cost. This represented a marginal decline on the 8.0 per cent in 1980-81 to 1982-83, and the 7.6 per cent in 1983-84 and 1984-85.

During the period 1980-81 to 1985-86, Victoria's percentage share of the national GDP at factor cost for the Transport, storage, and communication industry declined from 26.2 per cent to 23.4 per cent.

TABLE 11.1 TRANSPORT, STORAGE, AND COMMUNICATION INDUSTRY - GROSS DOMESTIC PRODUCT AT FACTOR COST

	1980-81	1981-82	1982-83	1983-84	1984-85	1985-86
Australia (\$m)	10,193	11,880	12,938	14,631	16,266	17,930
Victoria (\$m)	2,675	2,980	3,166	3,473	3,855	4,188
Victoria as a percentage of Australia	26.2	25.1	24.5	23.7	23.7	23.4

### Metropolitan transport

Since 1983, the Metropolitan Transit Authority (MTA) has been responsible for the operations of the Melbourne metropolitan public transport system which utilises trains, trams, and buses. In 1986-87, the total number of vehicles in use had increased by 49 from the 1983-84 figure of 2029; the

TABLE 11.2 METROPOLITAN TRANSIT AUTHORITY OPERATIONS AND SERVICES, VICTORIA

Particulars	1984-85	1985-86	1986-87
Vehicles in service -			
Rail (excluding trams)	154	161	162
Tram	662	642	627
Government bus	316	315	323
Private bus	930	950	966
<b>Total</b>	<b>2,062</b>	<b>2,068</b>	<b>2,078</b>
Passengers - boarding (millions)	279	288	291
Fares revenue (\$m)	150	158	176
Subsidies provided by Victorian Government (\$m)	267	333	271
Net annual deficit (\$m)	219	140	48

Source: Annual Reports of Melbourne Transit Authority

### TRANSPORT, COMMUNICATION AND TOURISM

Background: Ski-run Mt Bulla - *Victorian Tourism Commission.*

Inset: (Top) Unloading of rail and road containers at South Dynon - *VilLine State Transport Authority.*

(Below) A close-up illuminated photograph of an optical fibre, 'state of the art' in communications today. Capable of carrying ten times more traffic than a conventional copper cable ten times the size, optical fibre is gradually being phased in to replace conventional cables - *Telecom Australia.*

number of passengers had increased by 12 per cent to 291 million from the 1983-84 figure of 259 million, and fares revenue had increased by 23 per cent from \$143m in 1983-84 to \$176m. The net annual deficit in 1986-87 was \$48m, a 66 per cent decrease from \$140m in 1985-86, and a 48 per cent decrease on the \$92m in 1983-84.

### Rail

Over the period 1981-82 to 1986-87, there was a 10 per cent decrease in the average number of kilometres open for traffic. Goods train traffic kilometres have also decreased, with the 1986-87 number (7.3m) being 29 per cent less than 1981-82 (10.3m). The number of suburban passenger journeys increased

**TABLE 11.3 RAILWAYS TRAFFIC, EXCLUDING ROAD MOTOR SERVICES, VICTORIA**

Traffic	1981-82	1982-83	1983-84	1984-85	1985-86	1986-87
Average number of kilometres open for traffic	5,812	5,814	5,760	5,760	5,372	5,257
	('000)					
Traffic train kilometres -						
Country and interstate	6,661	7,004	7,552	7,047	7,857	7,507
Suburban	14,209	14,549	14,483	13,983	14,200	13,600
Goods	10,266	8,613	9,170	9,258	7,752	7,292
<b>Total</b>	<b>31,136</b>	<b>30,166</b>	<b>31,205</b>	<b>30,288</b>	<b>29,809</b>	<b>34,271</b>
Passenger journeys -						
Country and interstate	3,587	4,126	3,952	4,293	4,963	5,222
Suburban (a)	72,726	80,197	83,500	86,300	89,300	92,600
<b>Total</b>	<b>76,313</b>	<b>84,323</b>	<b>87,452</b>	<b>90,593</b>	<b>94,263</b>	<b>97,822</b>

(a) These figures exclude suburban rail journeys made on multi-modal tickets purchased on trams or buses.

Source: Ministry of Transport, Victoria

**TABLE 11.4 COUNTRY AND PROVINCIAL ROAD PASSENGER SERVICES, VICTORIA**  
( '000)

Particulars	1984-85	1985-86	1986-87
<b>PRIVATE BUS SERVICES</b>			
Country services -			
Passengers	3,762	3,738	3,763
Bus kilometres	8,586	8,870	8,565
Revenue (\$)	4,044	4,403	4,858
Subsidy (\$)	1,290	1,720	3,280
Urban services (a) -			
Passengers	7,052	6,997	7,410
Bus kilometres	5,555	5,623	5,719
Revenue (\$)	3,391	3,414	3,927
Subsidy (\$)	5,000	6,190	7,550
<b>CONTRACT SERVICES</b>			
Passengers	347	462	428
Bus kilometres	3,439	4,212	4,043
Contract costs (\$)	2,883	3,838	3,909

(a) Covers the Geelong, Ballarat, Bendigo, and La Trobe Valley areas.



steadily from 72.7 million in 1981-82 to 92.6 million in 1986-87. Country and interstate passenger journeys have fluctuated in number over the period but at 5.2 million in 1986-87 they were 46 per cent more than in 1981-82 (3.6 million).

### Bus

Metropolitan Melbourne is served by both Government and private buses. From 1 July 1983, bus services in Victorian country areas and provincial centres came under the control of the State Transport Authority (V/Line). The services are operated by private bus companies, some of which are under contract to V/Line to provide coach services connecting with or extending the rail network.

### Roads and motor vehicles

In 1986-87 there were 159,376 kilometres of roads and streets open for general traffic, of which 7,584 kilometres were State highways and freeways and 14,771 kilometres were main roads. The total length of all roads and streets open for general traffic in Victoria increased marginally between 1984-85 and 1986-87 from 157,848 kilometres to 159,376 kilometres. Expenditure on roads and bridges by the Road Construction Authority between 1982-83 and 1987-88 has increased 38 per cent in current dollar terms. The construction of State highways and freeways constitute the biggest proportion of road and bridges total construction expenditure, varying from 55 per cent in 1982-83 to 61 per cent in 1987-88. The proportion of total maintenance expenditure to total construction expenditure on roads and bridges in these 6 years remained between 30 and 37 per cent.

TABLE 11.5 LENGTH OF ALL ROADS AND STREETS OPEN FOR GENERAL TRAFFIC AT 30 JUNE (a), VICTORIA  
(kilometres)

Type of road or street	1984-85	1985-86	1986-87
State highways, freeways	7,534	7,527	7,584
Main roads	14,854	14,867	14,771
Tourist roads, forest roads	1,853	1,851	1,848
Other roads and streets	133,607	134,329	135,173
<b>Total</b>	<b>157,848</b>	<b>158,574</b>	<b>159,376</b>

(a) Excludes roads which are the responsibility of the State Electricity Commission, Melbourne and Metropolitan Board of Works, and the Forests Commission.

TABLE 11.6 ROAD CONSTRUCTION AUTHORITY, EXPENDITURE ON ROADS AND BRIDGES, VICTORIA (a)  
(\$'000)

Particulars	1982-83	1983-84	1984-85	1985-86	1986-87	1987-88
State highways -						
Construction	51,510	73,475	78,633	81,065	74,527	82,716
Maintenance	29,651	33,669	33,427	36,921	37,107	41,565
Freeways -						
Construction	65,918	80,310	94,571	114,498	123,696	100,452
Maintenance	7,512	8,051	8,627	7,474	10,619	11,933
Main roads -						
Construction	41,124	48,197	53,675	55,873	51,865	51,642
Maintenance	23,630	26,141	27,845	28,850	30,969	35,285
Unclassified roads -						
Construction	48,846	59,225	58,556	60,344	53,578	59,724

**TABLE 11.6 ROAD CONSTRUCTION AUTHORITY, EXPENDITURE ON ROADS AND BRIDGES, VICTORIA (a) - continued**  
(\$'000)

<i>Particulars</i>	<i>1982-83</i>	<i>1983-84</i>	<i>1984-85</i>	<i>1985-86</i>	<i>1986-87</i>	<i>1987-88</i>
Maintenance	11,990	12,957	13,315	15,558	10,198	10,313
Tourists' roads -						
Construction	3,504	6,024	4,962	6,184	6,155	3,556
Maintenance	3,853	3,891	4,225	3,996	4,870	5,078
Forest roads -						
Construction	1,013	1,306	1,358	1,378	1,189	1,423
Maintenance	1,597	1,725	1,828	1,981	2,163	2,351
Rail-over road bridge protection	1,469	-	-	-	-	-
Traffic Facilities Program-works expenditure	7,535	12,644	14,340	12,953	14,743	7,635
Murray River bridges and punts	520	514	758	142	527	474
Traffic line marking	4,283	3,833	3,852	4,023	3,514	4,411
Wage Pause Employment Program	-	1,209	31	-	-	-
Metropolitan street name signing	-	-	1	476	703	189
Commonwealth Employment Program	-	-	78	124	260	-
<b>Total construction</b>	<b>211,915</b>	<b>268,537</b>	<b>291,755</b>	<b>319,342</b>	<b>311,010</b>	<b>299,513</b>
<b>Total maintenance</b>	<b>78,233</b>	<b>86,434</b>	<b>89,267</b>	<b>94,780</b>	<b>95,926</b>	<b>106,525</b>
<b>Total other</b>	<b>13,807</b>	<b>18,200</b>	<b>19,060</b>	<b>17,718</b>	<b>19,747</b>	<b>12,709</b>
<b>Total expenditure-works</b>	<b>303,955</b>	<b>373,171</b>	<b>400,082</b>	<b>431,840</b>	<b>426,683</b>	<b>418,747</b>

(a) Expenditure for the financial years 1986-87 and 1987-88 is on an accrual basis of accounting while previous years are on a cash basis.

There were 2,529,400 motor vehicles on register in Victoria at 30 June 1987, a 16 per cent increase on the 2,171,800 at 30 June 1982. The greatest proportionate increases were in rigid trucks and buses, with increases of 29 and 22 per cent, respectively. Between 1982 and 1987 the only decrease was in panel vans; from 59,400 in 1982 to 57,400 in 1987, a decrease of 3 per cent. As a proportion of the Australian total of motor vehicles on register, the Victorian component increased steadily from 26 per cent in 1982 to 27 per cent in 1987.

**TABLE 11.7 MOTOR VEHICLES ON REGISTER AT 30 JUNE**  
('000)

<i>Type of vehicle</i>	<i>1982</i>	<i>1983</i>	<i>1984</i>	<i>1985</i>	<i>1986</i>	<i>1987</i>
Motor cars and station wagons	1,731.2	1,796.5	1,859.7	1,936.8	1,972.9	2,010.2
Utilities	122.0	127.0	133.4	137.8	139.2	142.8
Panel vans	59.4	60.1	60.4	59.0	56.0	57.4
Trucks -						
Rigid	149.5	157.5	168.5	181.1	187.0	193.1
Articulated	12.2	12.2	12.5	13.0	13.3	13.7
Other truck type vehicles	11.7	12.5	12.6	13.0	12.9	13.6
Buses	11.5	12.2	12.9	13.5	13.8	14.1
Motor cycles	74.3	79.6	81.7	83.4	81.8	84.5
<b>Total - Victoria</b>	<b>2,171.8</b>	<b>2,257.7</b>	<b>2,341.8</b>	<b>2,437.7</b>	<b>2,476.8</b>	<b>2,529.4</b>
<b>Total - Australia</b>	<b>8,358.4</b>	<b>8,589.8</b>	<b>8,832.8</b>	<b>9,118.3</b>	<b>9,290.5</b>	<b>9,374.3</b>
<b>Victoria as a percentage of Australia</b>	<b>26.0</b>	<b>26.3</b>	<b>26.5</b>	<b>26.7</b>	<b>26.7</b>	<b>27.0</b>



There were 130,394 riders' licences in force at the end of June 1988, an increase of 30 per cent on the 100,377 at the end of June 1983. Motor cycles on register at the end of June 1987 were 84,500 in number, which represented an increase of 14 per cent on the 1982 figure of 74,300. In contrast, drivers' licences in force at the end of June 1988 numbered 2,566,312, an increase of 16 per cent on 2,216,443 in 1983. Motor vehicles (excluding motor cycles) on register increased by 17 per cent from 2,097,500 in 1982 to 2,444,900 in 1987.

**TABLE 11.8 DRIVERS' AND RIDERS' LICENCES (a) IN FORCE AT 30 JUNE, VICTORIA**

Type of Licence	1983	1984	1985	1986	1987	1988
Drivers'	2,216,443	2,262,444	2,338,907	2,390,888	2,472,057	2,566,312
Riders'	100,377	107,178	112,532	109,557	118,301	130,394
<b>Total</b>	<b>2,316,820</b>	<b>2,369,622</b>	<b>2,451,439</b>	<b>2,500,445</b>	<b>2,590,358</b>	<b>2,696,706</b>

(a) A licence holder may hold both a drivers' and a riders' licence and be counted in both categories.

### Road traffic accidents

In 1987 the number of road traffic accidents involving casualties was 19,531, an increase of 27 per cent since 1982. The number of persons injured in these accidents was 25,723, an increase of 27 per cent over the same period. However, the number of persons killed in 1987 (705) decreased by 1 per cent from 1982 (709).

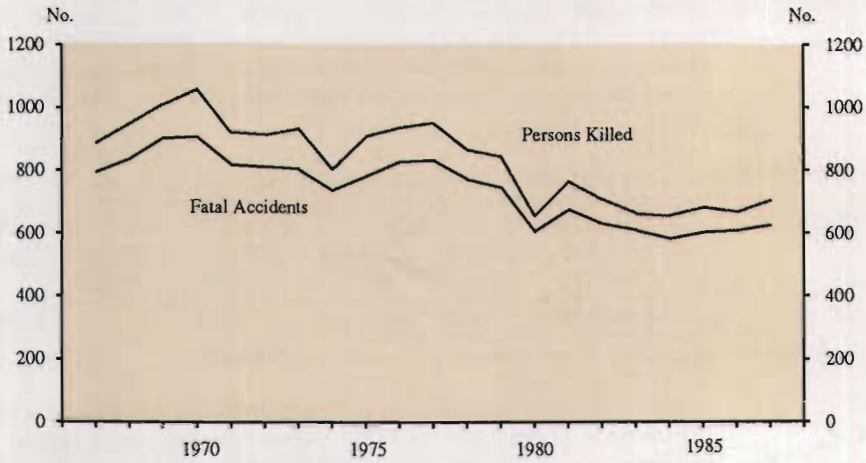
For the period 1985 to 1987, drivers of motor vehicles remained the highest category of all types of road users killed and injured. Drivers killed increased by 15 per cent from 268 to 309, whereas the number of drivers injured increased by 20 per cent, from 10,293 to 12,310. The next most severely affected category was passengers, where the number injured increased by 10 per cent, from 6,973 (1985) to 7,649 (1987). However, the number of passengers killed, after decreasing from 188 in 1985 to 165 in 1986, increased to 170 in 1987. The number of pedal cyclists killed decreased by 4 per cent from 26 in 1985 to 25 in 1987, whereas the number injured increased 25 per cent from 1,219 to 1,528. Over the same period, the age groups 17-20 years and 21-25 years suffered the greatest numbers killed and injured. Actual numbers killed in 1985 were highest in the age group 21-25 years, in 1986 in the age group 17-20 years and in 1987 in the age group 60 years and over.

In 1987 there were 17 road traffic accident deaths per 100,000 of the Victorian population. This figure has steadily declined from a peak of 32 in 1970.

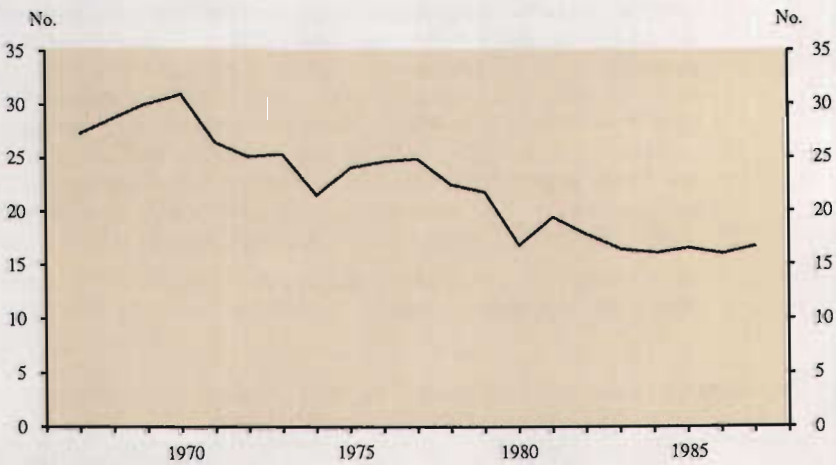
**TABLE 11.9 ROAD TRAFFIC ACCIDENTS INVOLVING CASUALTIES, NUMBER OF PERSONS KILLED OR INJURED, VICTORIA**

Period	Fatal accidents	Total accidents	Persons killed	Persons injured	Per 100,000 of mean population		
					Total accidents	Persons killed	Persons injured
1982	631	15,380	709	20,293	385.2	17.8	508.2
1983	610	15,225	664	20,008	377.1	16.4	495.5
1984	584	16,001	657	21,311	392.4	16.1	522.5
1985	605	16,774	683	22,452	407.0	16.6	544.8
1986	610	17,291	668	23,274	415.2	16.0	558.9
1987	626	19,531	705	25,723	464.1	16.8	611.1

**FATAL ROAD TRAFFIC ACCIDENTS AND PERSONS KILLED  
VICTORIA, 1967 TO 1987**



**NUMBER OF PERSONS KILLED IN ROAD TRAFFIC ACCIDENTS  
PER 100,000 MEAN POPULATION, VICTORIA**



**TABLE 11.10 ROAD TRAFFIC ACCIDENTS INVOLVING CASUALTIES, VICTORIA AS A PERCENTAGE OF AUSTRALIA**

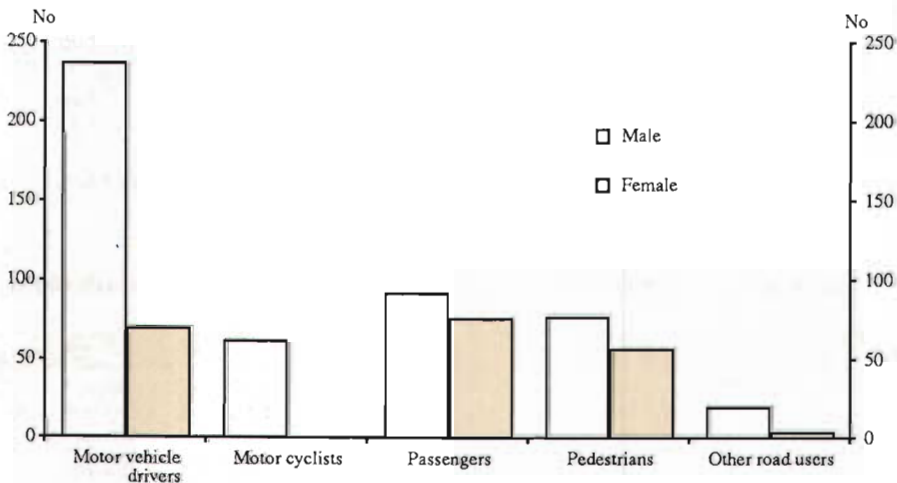
<i>Particulars</i>	1985	1986	1987
Accidents - Fatal	23.0	23.7	25.2
Serious injury (a)	29.3	29.7	n.a.
Casualties - Persons killed	23.2	23.1	25.4
Persons admitted to hospital	29.5	30.4	n.a.
Estimated mean resident population	26.2	26.0	25.9
Motor vehicles on register at 30 June	26.7	26.7	27.0

(a) A non-fatal road vehicle accident resulting in one or more persons being admitted to hospital.

**TABLE 11.11 ROAD TRAFFIC ACCIDENTS INVOLVING CASUALTIES, TYPE OF ROAD USER KILLED OR INJURED, VICTORIA**

<i>Type of road user</i>	1985		1986		1987	
	<i>Killed</i>	<i>Injured</i>	<i>Killed</i>	<i>Injured</i>	<i>Killed</i>	<i>Injured</i>
Drivers of motor vehicles	268	10,293	280	10,894	309	12,310
Motor cyclists	64	1,832	67	1,759	64	1,916
Passengers (any type)	188	6,973	165	7,293	170	7,649
Pedestrians	134	2,057	139	2,050	136	2,178
Pedal cyclists	26	1,219	16	1,190	25	1,528
Other	3	78	1	88	1	142
<b>Total</b>	<b>683</b>	<b>22,452</b>	<b>668</b>	<b>23,274</b>	<b>705</b>	<b>25,723</b>

**NUMBER OF PERSONS KILLED BY TYPE OF ROAD USER VICTORIA, 1987**





**TABLE 11.12 ROAD TRAFFIC ACCIDENTS INVOLVING CASUALTIES, AGES OF PERSONS KILLED OR INJURED, VICTORIA**

Age group (years)	1985		1986		1987	
	Killed	Injured	Killed	Injured	Killed	Injured
0 - 4	21	416	13	445	11	438
5 - 16	60	2,475	48	2,572	61	2,791
17 - 20	104	4,002	138	4,276	123	4,766
21 - 25	138	4,106	119	4,290	107	4,562
26 - 29	50	2,027	60	2,054	53	2,339
30 - 39	93	3,156	80	3,449	95	3,758
40 - 49	43	1,916	47	2,073	64	2,362
50 - 59	43	1,434	42	1,445	51	1,709
60 and over	131	1,765	121	1,906	139	2,151
Not stated	-	1,155	-	764	1	847
<b>Total</b>	<b>683</b>	<b>22,452</b>	<b>668</b>	<b>23,274</b>	<b>705</b>	<b>25,723</b>

### Air transport

In 1987 there were 5.6 million domestic passengers embarking and disembarking at Melbourne (Tullamarine) airport from 68,090 domestic aircraft movements. The number of domestic passenger embarkations and disembarkations was the highest for the six year period 1982 to 1987, with the domestic aircraft movements 11 per cent higher than the 1982 figure of 61,484. International aircraft movements in 1987 were 13,641, a 27 per cent increase over 1982 (10,710).

**TABLE 11.13 MELBOURNE (TULLAMARINE) AIRPORT**

Particulars	1982	1983	1984	1985	1986	1987
Domestic aircraft movements	61,484	57,497	57,437	60,570	63,640	68,090
Domestic passengers embarked ('000)	2,414	2,211	2,322	2,519	2,606	2,776
Domestic passengers disembarked ('000)	2,417	2,223	2,324	2,521	2,614	2,785
International aircraft movements	10,710	9,481	10,575	11,359	12,691	13,641
Passengers arriving from/departing to overseas	968,002	919,370	1,043,546	1,156,681	1,261,913	1,372,915

Source: Department of Transport and Communications.

**TABLE 11.14 REGULAR DOMESTIC INTERSTATE AIR SERVICES TERMINATING IN VICTORIA**

Particulars	1982	1983	1984(a)	1985	1986	1987
Kilometres flown ('000)	46,960	44,322	43,752	46,577	49,313	52,254
Passenger kilometres ('000)	4,738,161	3,749,395	3,905,837	4,254,598	4,472,940	4,812,800
Freight -						
Tonnes	88,295	87,950	99,455	102,961	94,121	90,132
Tonne kilometres ('000)	68,686	70,976	82,511	84,565	80,001	77,410
Mail -						
Tonnes	7,670	7,567	7,954	8,151	8,054	8,906
Tonne kilometres ('000)	7,106	7,096	7,342	7,779	8,054	8,760

(a) Not comparable with previous series. From 1984, the statistics are based on traffic on board direct domestic interstate flights to or/from Tullamarine and Essendon Airports.

Source: Department of Transport and Communications.



## COMMUNICATIONS

In 1988 there were 2.8 million instruments connected in Victoria, a ratio of 653 per 1,000 of the population. This ratio has increased from 592 in 1983. Instruments comprise telephone installations, excluding switchboards and switching equipment. The number of public telephones in 1988 was 6,910 a increase of 6 per cent from 6,514 in 1983.

There were 865 million standard articles posted in Victoria and received from overseas in Victoria in 1987-88. This was 28 per cent more than in 1982-83 (678 million). The corresponding figure for registered articles (excluding registered parcels) in 1987-88 was 1.7 million, a decrease of 14 per cent on 1982-83 (2.0 million).

The number of television stations has remained the same from 1982 to 1987, but air radio broadcasting stations increased from 38 to 52 in the same period.

TABLE 11.15 TELEPHONE SERVICES AT 30 JUNE, VICTORIA

Particulars	1983	1984	1985	1986	1987	1988
Telephone exchanges	1,103	1,103	1,167	1,096	1,097	1,099
Public telephones	6,514	6,487	6,556	6,084	6,920	6,910
Services in operation ('000)	1,536	1,593	1,671	1,740	1,839	1,919
Instruments connected (a) ('000)	2,388	2,358	2,446	2,554	2,656	2,772
Instruments per 1,000 of population	592	579	593	611	631	653

(a) Telephone installations excluding switchboards and switching equipment.

Source: Australian Telecommunications Commission.

TABLE 11.16 POSTAL ARTICLES HANDLED BY AUSTRALIA POST, VICTORIA ('000)

Period	Standard articles	Registered articles (except parcels)	Non-standard articles	Parcels (including registered)
POSTED IN VICTORIA FOR DELIVERY WITHIN AUSTRALIA				
1982-83	602,530	770	113,610	8,420
1983-84	622,338	687	110,860	7,962
1984-85	659,247	700	122,076	8,466
1985-86	676,452	662	133,487	9,295
1986-87	722,664	375	142,681	9,401
1987-88	792,202	311	142,822	9,419
POSTED IN VICTORIA FOR DELIVERY OVERSEAS AND RECEIVED IN VICTORIA FROM OVERSEAS				
1982-83	75,134	1,210	18,389	934
1983-84	75,171	1,234	18,705	1,258
1984-85	71,033	1,227	20,466	1,360
1985-86	71,920	1,183	20,012	1,219
1986-87	71,900	1,309	20,453	1,385
1987-88	72,614	1,390	21,881	1,396
TOTAL POSTED IN VICTORIA AND RECEIVED FROM OVERSEAS IN VICTORIA				
1982-83	677,664	1,980	131,999	9,354
1983-84	697,509	1,921	129,565	9,220
1984-85	730,280	1,927	142,542	9,826
1985-86	748,372	1,845	153,499	10,514
1986-87	794,564	1,684	163,134	10,786
1987-88	864,816	1,701	164,703	10,815

Source: Australian Postal Commission

**TABLE 11.17 BROADCAST AND TELEVISION STATIONS LICENSED AT 30 JUNE, VICTORIA**

<i>Particulars</i>	1983	1984	1985	1986	1987	1988
Broadcasting stations -						
Commercial	24	24	24	24	24	24
National	12	13	15	15	16	16
Special Broadcasting Service	1	1	1	1	1	1
Public	7	7	7	8	11	11
<b>Total</b>	<b>44</b>	<b>45</b>	<b>47</b>	<b>48</b>	<b>52</b>	<b>52</b>
Television stations -						
Commercial	9	9	9	9	9	9
National	9	9	9	9	9	9
Special Broadcasting Service	1	1	1	1	1	1
<b>Total</b>	<b>19</b>	<b>19</b>	<b>19</b>	<b>19</b>	<b>19</b>	<b>19</b>

Source: Australian Broadcasting Tribunal.

### TOURISM

A quarterly accommodation survey is undertaken to provide information about the utilisation of available tourist accommodation. These surveys commenced from the September quarter 1975. Data collected includes the available capacity, room occupancy, bed occupancy, and takings from accommodation. Currently, the types of accommodation surveyed are hotels, motels, and guest houses with facilities; caravan parks; and holiday flats, units, and houses.

Accommodation establishments in the snow districts of Victoria, which are located within the North Eastern and Goulburn Statistical Divisions, usually experience high occupancy during the September quarter. Occupancy rates in the Northern Mallee Statistical Division tend to be highest in the cooler months of the June and September quarters. For the remainder of the State, high occupancy occurs during the Christmas school holidays, particularly in the statistical divisions with coastal resorts.

**TABLE 11.18 HOTELS, MOTELS AND GUEST HOUSES WITH FACILITIES: NUMBER OF ESTABLISHMENTS (a), NUMBER OF GUEST ROOMS (a), OCCUPANCY RATES (b) AND TAKINGS (b); BY STATISTICAL DIVISION, VICTORIA**

		1982-83	1983-84	1984-85	1985-86	1986-87	1987-88
<b>MELBOURNE STATISTICAL DIVISION</b>							
Establishments	No.	185	180	178	179	185	188
Guest rooms	No.	8,423	8,399	8,566	8,784	9,582	9,661
Room occupancy rate	Per cent	59.5	61.3	64.2	65.8	62.8	65.3
Takings from accommodation	\$'000	81,800	90,652	107,243	123,783	148,567	190,535
<b>BARWON STATISTICAL DIVISION</b>							
Establishments	No.	51	50	50	52	57	64
Guest rooms	No.	962	972	993	1,025	1,078	1,148
Room occupancy rate	Per cent	44.4	45.5	45.6	45.5	45.0	45.7
Takings from accommodation	\$'000	4,872	5,327	5,829	6,311	7,025	8,416



**TABLE 11.18 HOTELS, MOTELS AND GUEST HOUSES WITH FACILITIES: NUMBER OF ESTABLISHMENTS (a), NUMBER OF GUEST ROOMS (a), OCCUPANCY RATES (b) AND TAKINGS (b); BY STATISTICAL DIVISION, VICTORIA - continued**

		1982-83	1983-84	1984-85	1985-86	1986-87	1987-88
<b>SOUTH WESTERN STATISTICAL DIVISION</b>							
Establishments	No.	50	50	50	52	57	61
Guest rooms	No.	1,027	1,035	1,038	1,019	1,057	1,145
Room occupancy rate	Per cent	46.1	46.5	48.0	53.8	47.6	47.0
Takings from accommodation	\$'000	4,801	5,231	5,743	6,923	6,877	7,761
<b>CENTRAL HIGHLANDS STATISTICAL DIVISION</b>							
Establishments	No.	38	37	38	41	44	44
Guest rooms	No.	673	696	740	839	896	894
Room occupancy rate	Per cent	55.9	58.0	60.8	60.8	55.5	51.5
Takings from accommodation	\$'000	4,299	4,849	5,784	6,671	7,353	7,696
<b>WIMMERA STATISTICAL DIVISION</b>							
Establishments	No.	37	37	37	37	40	44
Guest rooms	No.	608	608	609	608	687	747
Room occupancy rate	Per cent	47.6	48.3	49.3	47.5	47.1	45.6
Takings from accommodation	\$'000	2,946	3,298	3,567	3,777	4,599	5,406
<b>NORTHERN MALLEE STATISTICAL DIVISION</b>							
Establishments	No.	51	50	50	50	51	52
Guest rooms	No.	1,412	1,369	1,367	1,368	1,370	1,402
Room occupancy rate	Per cent	51.4	55.0	56.8	59.0	54.9	51.6
Takings from accommodation	\$'000	7,917	8,825	9,691	10,676	10,581	11,082
<b>LODDON - CAMPASPE STATISTICAL DIVISION</b>							
Establishments	No.	62	62	61	59	62	68
Guest rooms	No.	1,003	988	985	969	1,013	1,147
Room occupancy rate	Per cent	50.6	53.8	55.0	55.8	53.0	49.9
Takings from accommodation	\$'000	5,388	6,142	6,664	7,190	7,333	8,810
<b>GOULBURN STATISTICAL DIVISION</b>							
Establishments	No.	69	67	69	71	77	77
Guest rooms	No.	1,133	1,146	1,197	1,194	1,342	1,352
Room occupancy rate	Per cent	40.8	43.5	42.2	42.8	43.3	41.1
Takings from accommodation	\$'000	5,529	6,053	6,462	7,178	8,096	8,774
<b>NORTH EASTERN STATISTICAL DIVISION</b>							
Establishments	No.	76	76	75	76	77	77
Guest rooms	No.	1,428	1,459	1,424	1,428	1,423	1,479
Room occupancy rate	Per cent	43.1	41.3	40.1	43.1	46.2	45.8
Takings from accommodation	\$'000	7,411	8,131	8,370	9,852	10,714	10,542
<b>EAST GIPPSLAND STATISTICAL DIVISION</b>							
Establishments	No.	51	51	51	54	59	60
Guest rooms	No.	1,009	1,020	1,011	1,065	1,110	1,117
Room occupancy rate	Per cent	51.3	49.0	50.3	49.3	47.1	47.3
Takings from accommodation	\$'000	5,424	5,684	6,256	6,763	7,144	8,010



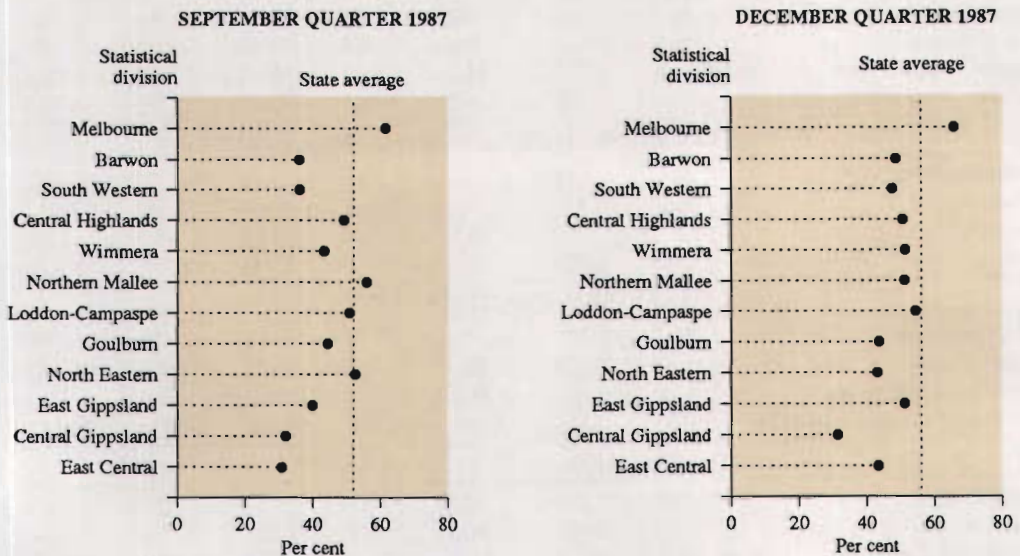
**TABLE 11.18 HOTELS, MOTELS AND GUEST HOUSES WITH FACILITIES: NUMBER OF ESTABLISHMENTS (a), NUMBER OF GUEST ROOMS (a), OCCUPANCY RATES (b) AND TAKINGS (b); BY STATISTICAL DIVISION, VICTORIA - continued**

		1982-83	1983-84	1984-85	1985-86	1986-87	1987-88
<b>CENTRAL GIPPSLAND STATISTICAL DIVISION</b>							
Establishments	No.	39	39	38	39	41	40
Guest rooms	No.	736	738	717	737	774	727
Room occupancy rate	Per cent	45.6	43.3	41.3	39.3	36.3	34.5
Takings from accommodation	\$'000	3,292	3,215	3,240	3,182	3,345	3,350
<b>EAST CENTRAL STATISTICAL DIVISION</b>							
Establishments	No.	30	30	30	30	32	30
Guest rooms	No.	579	576	583	609	606	555
Room occupancy rate	Per cent	39.6	40.0	39.3	38.0	37.2	41.4
Takings from accommodation	\$'000	2,661	3,066	3,203	3,213	3,487	4,062
<b>TOTAL VICTORIA</b>							
Establishments	No.	739	729	727	740	782	805
Guest rooms	No.	18,993	19,006	19,230	19,645	20,938	21,374
Room occupancy rate	Per cent	52.3	53.5	55.5	56.5	54.5	54.9
Takings from accommodation	\$'000	136,291	150,784	172,049	195,522	225,120	274,447

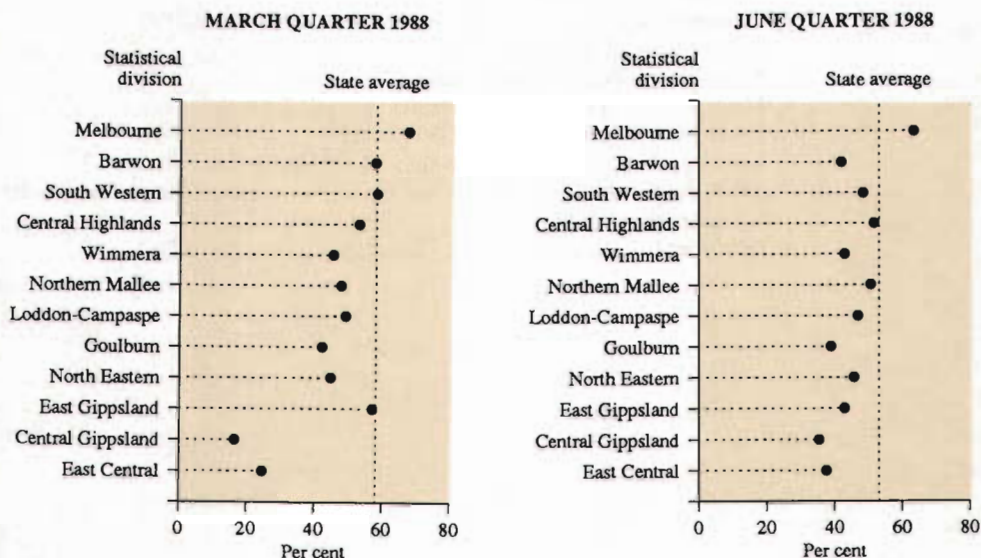
(a) Number of establishments and number of guest rooms as at 30 June of each year.

(b) Room occupancy rates and takings from accommodation represent the average and total respectively, for each twelve months period.

### HOTELS, MOTELS ETC., ROOM OCCUPANCY RATES, VICTORIA



**HOTELS, MOTELS ETC., ROOM OCCUPANCY RATES, VICTORIA**



**REFERENCES**

**Data sources**

The latest year for which ABS estimates are available for State Gross Domestic Product at factor cost by industry is 1983-84. For subsequent years, use has been made of estimates for gross operating surplus prepared by the Victorian Department of Management and Budget.

The statistics on Metropolitan Transport, railways, country and provincial road passengers services, and expenditure on roads and bridges have been obtained through the Ministry of Transport, Victoria: lengths of roads and streets is based on information supplied by the Road Construction Authority and municipal councils. Motor vehicles statistics were obtained from the Road Traffic Authority, Victoria, and the Commonwealth Department of Administrative Services (for Australian Government owned vehicles). Drivers' and riders' licences figures were provided by the Road Traffic Authority, Victoria.

Road traffic accident statistics are compiled by the ABS from data provided by the Road Traffic Authority, Victoria. The statistics on air transport were obtained from the Commonwealth Department of Transport and Communications; telephone services statistics from the Australian Telecommunications Commission; postal statistics from the Australian Postal Commission and the numbers of broadcast and television stations from the Australian Broadcasting Tribunal.

Tourist accommodation statistics are derived from the quarterly ABS Accommodation Survey. The survey covers hotels, motels and guest houses with facilities, short and long term caravan parks; and from the September quarter 1987, holiday flats, units, and houses.

- ABS publications**
- Tourist Accommodation, Australia (8635.0)*
  - Tourist Accommodation, Victoria (8635.2)*
  - Shipping and Air Cargo Commodity Statistics, Australia (9206.0)*
  - Motor Vehicle Registrations, Australia (monthly) (9303.0)*
  - Motor Vehicle Registrations, Victoria (9303.2)*
  - Motor Vehicle Registrations, Australia (annual) (9304.0)*
  - Motor Vehicle Census, Australia (9309.0)*
  - Road Traffic Accidents Involving Fatalities, Australia (9401.0)*
  - Road Traffic Accidents Involving Casualties (Admissions to Hospitals), Australia (9405.0)*
  - Road Traffic Accidents Involving Casualties, Victoria (9406.2)*